



WINE TOURISM GUIDE

TEJO

VISITS • TASTINGS • SALES • CUISINE • ACCOMMODATION



WINE TOURISM GUIDE

▸ TEJO ◀

Over the past few years the region of Ribatejo has become increasingly well known. The undeniable quality of its wines is due to a vinicultural revolution which has also contributed to the growth of local enotourism.

Most Tejo wines are produced in the inner moorland – which has poorer soil but better quality wine –, in the mountains and valleys of the Northern Ribatejo and in the sandier soils to the south. The properties of the Ribatejo are home to Portuguese and foreign varietals. These include Fernão Pires, Sauvignon Blanc

and Chardonnay, among the whites, and Castelão, Trincadeira, Touriga Nacional, Baga, Cabernet Sauvignon, Syrah and Merlot, among the reds. These varietals, among others, are used to make excellent wines at low cost, which are very attractive to consumers.

This is a territory known for bullfighting and the art of horse riding, for its nature and ecosystem, the Gothic architecture of Santarém. There are many properties worth visiting, so let us take you on a discovery of the region's wine-related tourism.

SYMBOLS



TOUR OF THE WINERY



TOUR OF THE VINEYARD



TASTINGS



SHOP



RESTAURANT



ACCOMMODATION

COORDINATION Maria João de Almeida

TEXTS Maria João de Almeida with Patricia Serrado and Ricardo Martins

GRAPHIC DESIGN João Pedro Rato

PHOTOGRAPHY Bruno Barata, Pedro Betencourt, Ricardo Gomez with Ricardo Junqueira

Depósito Legal: 447336/18 • ISBN: 978-989-773-140-2

1.ª edição – Novembro 2018

TEJO

- 06 Adega de Almeirim
- 08 Adega do Cartaxo
- 10 Adega Porta de Teira
- 12 Agro-Batoréu
- 14 Casa Cadaval
- 16 Casa Paciência
- 18 Companhia das Lezírias
- 20 Falua
- 22 Fiuza
- 24 Pinhal da Torre
- 26 Quinta da Alorna
- 28 Quinta da Badula
- 30 Quinta da Lagoalva de Cima
- 32 Quinta da Lapa
- 34 Quinta da Ribeirinha
- 36 Quinta de Santo André
- 38 Quinta do Arrobe
- 40 Quinta do Casal Branco
- 42 Quinta Monteiro Matos
- 44 Quinta Vale de Fornos

ADEGA DE ALMEIRIM ALMEIRIM

Rua Adega Cooperativa Almeirim, Almeirim • +351 243 570 560 • www.adegaalmeirim.pt



A total of one hundred ninety five producers, covering one thousand and two hundred hectares of vines grown in two distinct types of soil, make up the cooperative, which was founded in 1958. White varieties, especially Fernão Pires, make up the lion's share of the Lezíria, beside the Tagus, whereas the moorland, with its poor and sandy soils, is better suited for reds. The winery invested heavily in modernisation and restructuring over the past few years, which has translated into improvements in production, storage and bottling. Currently it produces around 20 million litres, making the Adega Cooperativa de Almeirim one of the largest in the country.

► ENOTOURISM

- Guided tour of the winery
- Wine tasting
- Shop

ADEGA DO CARTAXO CARTAXO

E.N. 365-2, Cartaxo • +351 243 770 987 / +351 919 918 978 • www.adegacartaxo.pt



The Cartaxo winery was founded in 1954 by a group of twenty two producers, but currently over 200 provide the best grapes grown on the eight hundred hectares of vines spread out over the councils of Cartaxo and Azambuja and some parishes of Rio Maior and Santarém. Since it moved to a new site, in 1974, the winery has invested in improving its human and technological resources, currently producing seven million litres annually. With a wide selection of bottled wines, reds make up around seventy five percent of production. The main varieties include Touriga Nacional, Trincadeira, Syrah, Castelão, Alicante Bouschet and Tinta Roriz and, among the whites, Fernão Pires and Arinto.

► ENOTOURISM

- Guided tour of the winery
- Guided tour of the vineyard
- Wine tasting
- Shop



ADEGA PORTA DE TEIRA RIO MAIOR

E.N. 1, Alto da Serra, Rio Maior • +351 243 991 429 / +351 969 841 875 • www.joaotmbarbosa.com



Located on a hill, with a view over the vines and not far from the salt pans of Sal Gema, in Rio Maior, the Adegas Porta de Teira follows a production policy of favouring quality over quantity. Wine runs through the veins of the proprietor, João Barbosa, grandson of the founder of the famous Caves Dom Teodósio. After the sale of his grandfather's company, and following a few years away from the sector, João Barbosa decided to return to the world of wines in 1997, and founded a small family-based company. His signature wines are produced in an integrated and biological manner, with the grapes planted in favourable soil and climate conditions, resulting in freshness and longevity. This is a project which involves the whole family, and you can count on them welcoming you with open arms.

► ENOTOURISM

- Guided tour of the winery
- Wine tasting
- Lunches and dinners
- Wine harvest activities
- Shop

AGRO-BATORÉU AZAMBUJA

Rua António Amaro dos Santos, 65, Aveiras de Cima, Azambuja • +351 263 475 154 • www.batoreu.com



The Batoréu and Canteiro families have been in the wine business for over five generations. It all began in 1860 when Ignácio Batoréu and José Canteiro established themselves as wine producers in Aveiras de Cima, growing their own grapes in vineyards in the Sítio dos Poços, which are still in the family. From 1900 on the business grew, a new winery was built and they began regular sales and distribution to Lisbon. The company remains in the same family and currently boasts close to seventy hectares of vines, with mostly traditional white and red varieties, such as Arinto and Fernão Pires among the former, and Trincadeira, Aragonês, Touriga Nacional and Touriga Franca among the latter. The vineyard also includes some international varieties such as Cabernet Sauvignon, Alicante Bouschet and Syrah.

► ENOTOURISM

- Guided tour of the winery
- Guided tour of the vineyard
- Wine tasting
- Shop



CASA CADAVAL SALVATERRA DE MAGOS

Rua Vasco da Gama, Muge, Salvaterra de Magos • +351 243 588 040 • www.casacadaval.pt



This winery has been in the Álvares Pereira de Mello family for almost four centuries. It is located on the left bank of the Tagus and, over the past five generations, has been run by women, including the current representative, Teresa Schönborn-Wiesentheid (Countess of Schönborn and Wiesentheid). Her father, the German Count Karl Schönborn-Wiesentheid was an experienced viticulturist and at Casa Cadaval he pioneered many techniques, such as separating varieties in properly identified plots, which in those days was still uncommon. The property, just over five thousand hectares, is divided among forest, irrigated crops, vines, horse breeding and cattle. The vineyard occupies forty-five hectares and includes national and international varieties.

► ENOTOURISM

- Guided tour of the winery
- Wine tasting
- Jeep and tractor tours
- Boat trips on the Tagus
- Horse shows and riding for beginners
- Bird watching
- Meals
- Shop



CASA PACIÊNCIA ALPIARÇA

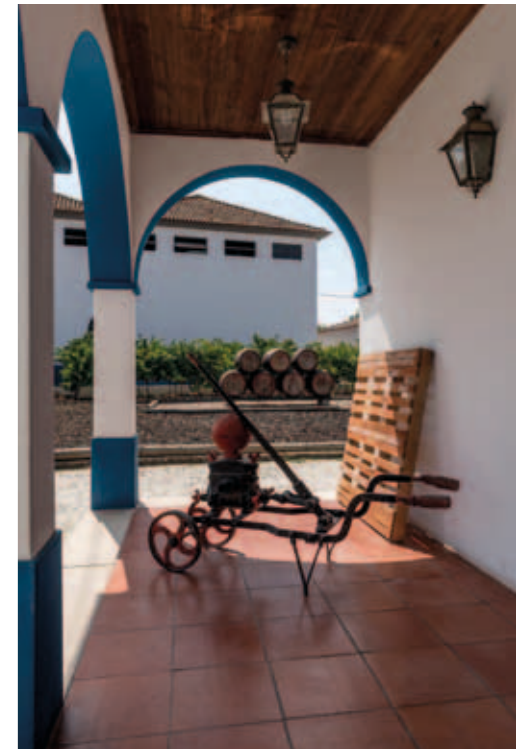
Rua Doutor Queiroz Vaz Guedes, 128, Alpiarça • +351 243 558 804 • casapaciencia@gmail.com



The legacy of the Casa Paciência, now more than an hundred years old, traces its roots to Hermínio Duarte Paciência, an ophthalmologist and wine producer who became a reference in Alpiarça. His grand-daughter, Luísa Paciência, chose to follow her grand-father's footsteps and got a degree in Agronomy so as to keep up the family tradition. This marked the beginning of a new phase in the project. The old vines were restructured and the winery equipment was modernized. The wine, which in the past had been sold in bulk, began to be bottled. Located in the heart of Alpiarça – where the winery, the office, the cellar, the shop and the tasting room are – the company operates several plots of vines with Portuguese varietals including Fernão Pires, Touriga Nacional, Castelão, Tinta Roriz and Trincadeira Preta, and some foreign ones, such as Chardonnay, Viognier, Cabernet Sauvignon, Pinot Noir and Syrah. Its wine portfolio includes the first ever Abafado Moscatel in the Tejo region.

► ENOTOURISM

- Guided tour of the winery
- Guided tour of the vineyard
- Wine harvest events
- Wine tasting
- Must tastings (during the harvest season)
- Regional produce tastings
- Tasting courses
- Partnerships with restaurants
- Shop



COMPANHIA DAS LEZÍRIAS BENAVENTE

Adega de Catapereiro, E.N. 118, Km 20, Samora Correia, Benavente • +351 212 349 016 • www.cl.pt / www.tytoalba.pt



Founded in 1836, this winery became a publicly owned limited company in 1997 and is currently the country's largest livestock and forestry producer in the country, at eighteen thousand hectares. Located between the Tagus and the Sorraia rivers, it is also one of Portugal's most promising companies in terms of biodiversity. Besides the meadows, the rice fields and the rows of corn, the cattle and the game, the olive grove, the forest and the investment in equestrian arts and tourism, there are a hundred and forty hectares of vines. These are mostly composed of Portuguese varietals, with sixty-five percent red and thirty-five percent whites.

► ENOTOURISM

- Guided tour of the winery
- Guided tour of the vineyard, the olive grove and the cork plantation
- Hikes and orienteering
- Mountain bike tours
- Wine tasting
- Bird watching
- Rural activities
- Traditional games
- Parties (weddings, baptisms, birthday parties)
- Restaurant
- Equestrian centre
- Lodgings (Bungalows)
- Camping
- Sports facilities
- Shop



Founded in 1994 by João Portugal Ramos, one of Portugal's most renowned oenologists, who produces wine in several Portuguese regions, Falua established its winery in Almeirim in 2004. More recently a majority share of the winery was purchased by the French Roullier group, but Portugal Ramos stayed on as minority partner and consultant. With the change in management, sales abroad took a new turn and there has been a strong investment in export markets. Equipped with the most modern technologies, Falua receives grapes from the finest Ribatejo terroirs, and this is reflected in the quality of the wines it produces.

► ENOTOURISM

- Guided tour of the winery
- Guided tour of the vineyard
- Wine tasting
- Meals



FIUZA ALMEIRIM

Travessa do Vareta, 11, Almeirim • +351 243 597 491 • www.fiuzabright.pt



The Fiuzza & Bright company, located in Almeirim since 1985, came about as a partnership between Fiuzza, a traditional wine producing company, and internationally renowned Australian oenologist Peter Bright. The year 2016 marked a new stage for Fiuzza wines, with the restyling of the winery and new enotourism activities.

The building was turned into a sort of art gallery, with graffiti by Portuguese artists Francisco Camilo, Smile Art and Slap, which symbolise the irreverence of the brand. The artists produced wine-themed art on the inner and outer walls of the winery, turning them into a unique mural in the wine sector. The brain behind this idea belongs to Maria Luiza Fiuzza Guedes de Queiroz, who with her sister, Maria da Piedade Fiuzza Nigra, is a partner in the company.

► ENOTOURISM

- Guided tour of the winery
- Guided tour of the vineyard
- Wine tasting
- Meals
- Wine and food events
- Shop



PINHAL DA TORRE ALPIARÇA

Quinta de São João, E.N. 118, Km 86, Alpiarça • +351 243 556 007 • www.pinhaldatorre.com



Pinhal da Torre is the name of the Saturnino Cunha family company, but also of the place where it is located, in Alpiarça, in the heart of the Ribatejo region. The company runs three properties: Quinta de São João (which has been in the family for over 100 years), Quinta do Alqueve and Águas Vivas (which is dedicated to biological viticulture). The winery, on the first of these, is from 1947. It has four foot-treading presses, seven Algerian style vats and two barrel rooms. This building is equipped with state of the art technology, including bottling, labelling and packaging lines. Interestingly, Pinhal da Torre was the first Portuguese wine company to use Braille on its bottles labels.

► ENOTOURISM

- Guided tour of the winery
- Wine tasting
- Shop

QUINTA DA ALORNA ALMEIRIM

Quinta da Alorna, Almeirim • +351 243 570 700 • www.alorna.pt



Dating back to 1723, it is one of the oldest wine estates in the Tagus region. It has been in the Lopo de Carvalho family for five generations, but it initially belonged to Pedro Miguel de Almeida Portugal, Viceroy of India, which earned him the title of Marquis of Alorna. It was his son, D. João de Almeida, married to D. Leonor Távora, the illustrious Marquess of Alorna, honored in the wine portfolio, who must have planted the vineyard. In the first half of the nineteenth century, it was sold to José Dias Leite Sampaio, Viscount of Junqueira, one of the great boosters of wine production. Today, it is one of the farms with the highest environmental and sustainability concerns. It has two thousand and eighth hundred hectares, two hundred and twenty of which are vineyards, and it reflects the legacy of the owner, a doctor and businessman, Manuel Caroça, through the reinforcement of agricultural, forestry and wine-growing activities, as well as in the production, management and marketing of wines, elaborated by the awarded winemaker Marta Reis Simões.

► ENOTOURISM

- Guided tour of the winery
- Wine tasting
- Shop



QUINTA DA BADULA RIO MAIOR

Quinta da Badula, Rua do Casal, Arroquelas, Rio Maior • +351 966 915 722 • www.quintadabadula.com



Located in Arroquelas, in Rio Maior, the Quinta da Badula is a family business, managed by a young lady farmer called Élia Marques Vitorino, and her husband Emanuel Vitorino. The first vines were planted in 2007 and soon afterwards they invited the oenologist António Ventura to join the team, so as to consolidate their project. Quality is given precedence over quantity on these sixty hectares of vines. The harvest is manual and the grapes are pressed by foot in stainless steel presses, equipped with refrigeration systems for controlled fermentation. The ageing takes place in oak barrels. The building is inspired by older wineries, but the equipment is all modern and adapted to current needs.

► ENOTOURISM

- Guided tour of the winery
- Guided tour of the vineyard
- Wine tasting



QUINTA DA LAGOALVA DE CIMA ALPIARÇA

Quinta da Lagoalva de Cima, Alpiarça • +351 243 559 070 • www.lagoalva.pt



It is located on the south bank of the river Tagus, about two kilometres from the village of Alpiarça. It has a long agricultural and wine growing tradition with the passage of the assets to the Casa de Palmela, when D. Maria de Noronha de Sampaio, in 1846, married D. Domingos António Maria Pedro de Souza e Holstein, second Duke of Palmela. In addition to the production of olive oil, cork extraction, cattle breeding and purebred Lusitano horses, Quinta da Lagoalva, with 600 hectares, continues to focus on wine traditions in its 45 hectares of vineyards. Twelve grape varieties are planted in it. Diogo Campilho is part of the oenology team, along with Pedro Pinhão, both with international experience. Three times it has received the ERT Alentejo/Ribatejo prize for the best Wine Tourism.

► ENOTOURISM

- Guided tour of the winery
- Guided tour of the chapel, riding arena and stables
- Carriage rides through the vineyard and the olive grove
- Wine tasting
- Tasting courses
- Rental for events and activities
- Shop



QUINTA DA LAPA AZAMBUJA

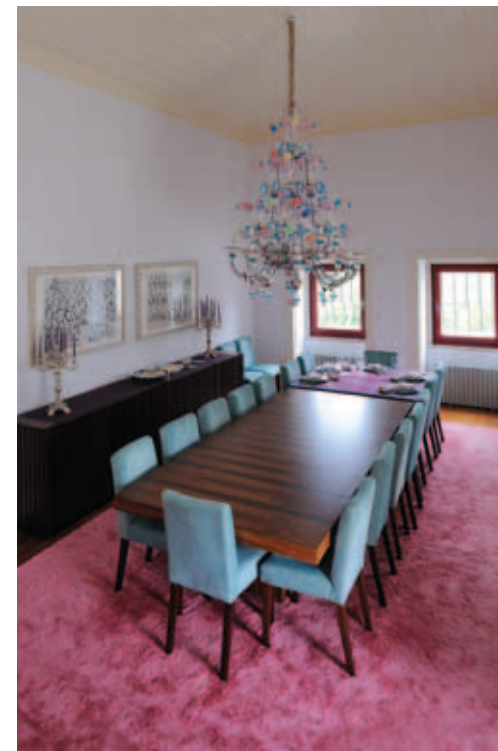
Rua 25 de Abril, 22, Manique do Intendente, Azambuja • +351 263 486 214 • www.quintadalapa-wines.com



D. Lourenço de Almeida was a man of great power and influence, sent by the King of Portugal to India and to Brazil, where he was entrusted with several important positions. He purchased this estate in 1706, having raised a manor house, with a chapel, on the highest part of it, besides developing agriculture and building a winery. Since that time the estate has belonged to several different proprietors, before ending up in the hands of José Guilherme da Costa, towards the end of the 80's. He had a new winery built and replanted the vines. In 2011, his daughter Sílvia Canas da Costa, an architect, had the house remodelled and turned into a wine hotel. The style and rich heritage of the house, originally built in 1756, was maintained, including the chapel and the rare tile panel of Our Lady of the Conception.

► ENOTURISMO

- Guided tour of the winery
- Guided tour of the vineyard
- Wine tasting
- Meals
- Picnics
- Rental for events and activities
- Wine hotel
- Hikes
- Horse rides
- Bicycle rides
- Hikes along the Tagus
- Fishing
- Harvest programme
- Shop



QUINTA DA RIBEIRINHA SANTARÉM

Rua Bispo D. António de Mendonça, 17, Póvoa de Santarém • +351 243 428 200 • www.quintadaribeirinha.com



The Cândido family has been in the wine business for several generations, but it was José Cândido who, at an early age, decided to make this his living. A doctor by training, he kept up the family traditions by planting new plots of vines and erecting a winery. Currently, the legacy is kept up by his children Mariana and Rui. Fifty of the one hundred hectares of the property are planted with vines, and the future plans include a rural hotel near the vineyard and the winery, so as to strengthen the touristic offering of the estate.

► ENOTOURISM

- Guided tour of the winery
- Guided tour of the vineyard
- Wine tasting
- Olive oil tasting
- Tasting courses
- Meals
- Cultural, wine and culinary events
- Shop

QUINTA DE SANTO ANDRÉ CORUCHE

Rua da Misericórdia, 46, Coruche • +351 243 617 173 • www.qsa.pt



The Veiga Teixeira have run this estate since the mid 19th century, when it first got involved in the wine business. More recently, during the eighties, the management of the property passed in to the hands of the fourth generation of the family, which has kept up the family legacy of winemaking. The Quinta de Santo André is located in the valley of the Sorraia River, near Coruche, and out of its seventeen hectares, 10 are planted with vines. But grapes are also brought in from the Herdade Vale Boi da Charneca, near the town, which has thirty five hectares of vine, out of a total of one thousand and forty one hectares. Over the years, the vineyard was restructured by selected planting of new vines and varieties. Technical evolution in the old winery has spread also to the assembly and bottling lines, as well as the warehouse.

► ENOTOURISM

- Guided tour of the winery
- Guided tour of the vineyard
- Wine tasting
- Meals
- Rental for events



QUINTA DO ARROBE SANTARÉM

Várzea de Baixo, Casével, Santarém • +351 243 441 901 • www.quintadoarrobe.pt



Joaquim Gaspar planted his first vines in 1882, thereby beginning his activity as a wine producer. However, the Gaspar family would only invest further in viticulture towards the end of the 80's in the newly acquired Quinta das Casas Altas, in Casével, Santarém. The initiative, this time, belonged to the founder's grandson, Alexandre Gaspar, who, having moved from Lisbon to Santarém, undertook a geological survey of the land and discovered the potential of the soils for growing grapes. Pride of place has been given to international varieties, which result in niche wines. The produce is heavily export-oriented and the wines themselves are designed by Alexandre's sister Maria Gaspar, who is an oenologist.

► ENOTOURISM

- Guided tour of the winery
- Guided tour of the vineyard
- Wine tasting
- Horse rides and riding lessons
- Meals
- Shop

QUINTA DO CASAL BRANCO ALMEIRIM

E.N. 118, Km 69, Almeirim • +351 243 592 412 • www.casalbranco.com



This estate has belonged to the Lobo de Vasconcellos family since 1775. Its approximately one thousand and one hundred hectares are well used to agriculture and viticulture, having been the stage for pioneering technical innovation in the region, including winery equipment. The vineyard covers one hundred and twenty hectares on the left margin of the Tagus and includes mostly Portuguese varieties, such as Fernão Pires, Castelão, Touriga Franca and Touriga Nacional. Foreign varieties such as Syrah, Merlot, Cabernet Sauvignon, Petit Verdot and Alicante Bouschet were recently introduced, completing the wine producing area. The most renowned label from this winery is Falcoaria, which has its roots in the fact that falconry was practiced in the estate in the times of the monarchy.

► ENOTOURISM

- Guided tour of the winery
- Guided tour of the vineyard
- Wine tasting
- Harvest programme
- Horse shows
- Meals
- Shop



QUINTA MONTEIRO DE MATOS SANTARÉM

Sobral, São Vicente do Paúl, Santarém • +351 244 481 014 • www.quintamonteiromatos.com



The main promoter of wine production in this family was António Monteiro de Matos, who planted the first vines in the seventy's. In 2003, with the second and third generation in command, the winery was remodelled, and investment was directed towards internationalisation of the wines produced. This implied a conversion of the vineyard, which now includes among its varietals reds such as Touriga Nacional, Syrah, Aragonês, Pinot Noir and Cabernet Sauvignon, and whites such as Antão Vaz, Arinto and Sauvignon Blanc. The winery has been modernized over the years and equipped with state of the art technology. Currently, over half of the production is exported.

► ENOTOURISM

- Guided tour of the winery
- Guided tour of the vineyard
- Wine tasting
- Tasting courses
- Meals
- Shop



QUINTA VALE DE FORNOS AZAMBUJA

E.N. 3, Azambuja • +351 263 402 105 • www.quintavalefornos.com



Located in Azambuja, the Quinta de Vale de Fornos dates back to the 16th century, and boasts a manor house and a winery which date from 1873. It was purchased by the legendary Douro wine businesswoman Antónia Ferreira, who gave it to her daughter when she married the third Count of Azambuja. More recently, during the seventy's, the Duarte Monteiro family purchased the estate, having carefully preserved it until today. The name of the property has its roots in the stoves which existed in the area and which would burn the lime that was extracted from the calcareous soil. The centuries old winery, now fitted out with modern technology, produces quality wines.

► ENOTOURISM

- Guided tour of the winery
- Guided tour of the vineyard
- Wine tasting
- Meals
- Rental for weddings

NOTES

NOTES

PROMOTERS:



COFINANCED:

